

# Office for Information Technology's Academic Technology Services

Margo Reveil

Director Research and Education Services

October 30, 2007

# Supporting digital scholarship in the Humanities, Social Sciences, Arts and Architecture

- Visualizations and Historic Reconstructions
- Digital Cultural Mapping/Geotemporal Research  
Geographic Information Systems (GIS)
- Digital Archives

# Visualizations and Historic Reconstructions



**The Romanesque Cathedral and Town of Santiago de Compostela, Galicia (Spain), ca. 1211**

John Dagenais  
Spanish & Portuguese



**Digital Roman Forum Project /**  
Diane Favro  
Architecture and Urban Design,  
Director, [Experiential Technologies Center](#)



**Qumran Visualization Project**

William Schniedewind  
Near Eastern Languages & Cultures

[www.nelc.ucla.edu/qumran/](http://www.nelc.ucla.edu/qumran/)



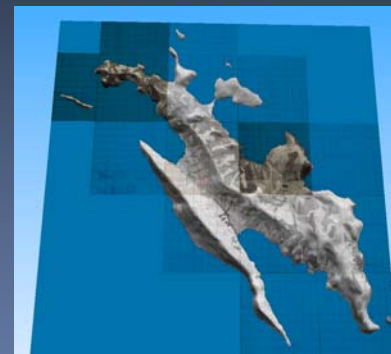
**Methamphetamine Addiction Testing (SecondLife)**

Dr. Thomas Newton  
Chris Culbertson  
Jane & Terry Semel Institute for Neuroscience & Behavior



**Lofkënd Archaeological Project**

Co-directors: Lorenc Bejko,  
Sarah P. Morris and John K. Papadopoulos



**Inca Temple of the Sun**

Chip Stanish  
Anthropology, Director  
[Cotsen Institute of Archaeology](#)

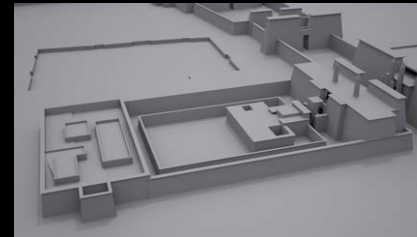
# Digital Archives



## UCLA Encyclopedia of Egyptology (UEE)

Willeke Wendrich  
Near Eastern Languages &  
Cultures

[www.uee.ucla.edu](http://www.uee.ucla.edu)



## Instructional Resources for Spatial and Cultural Analysis of an Ancient Egyptian Temple Complex (Karnak)

Diane Favro, AUD  
Willeke Wendrich, NELC



## Toward an Archaeography of Eurasianism: Velimir Khlebnikov's *Großbuch*

Ronald Vroon  
Slavic Languages & Literatures



## Bernard Picart and the Origins of Comparative Religion

Margaret Jacob, UCLA  
History  
Tom Moritz, Getty Research  
Institute

# Digital Cultural Mapping, Geotemporal Research and GIS



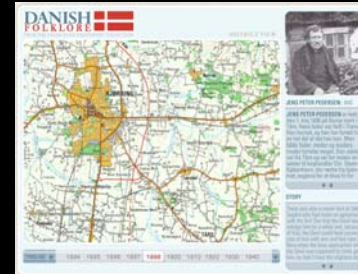
## Hypermedia Berlin

Todd Presner  
Germanic Languages

[www.berlin.ucla.edu](http://www.berlin.ucla.edu)

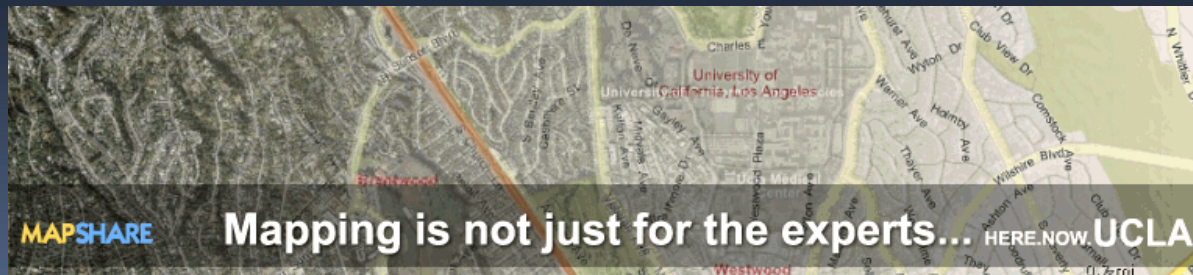
## HyperCities: Los Angeles

Diane Favro, AUD  
Todd Presner, Germanic Languages  
Jeff Burke, TFT



## Danish Folklore: A digital approach to the collections of Evald Tang Kristensen

Timothy R. Tangherlini  
Scandinavian Section



## Mapshare

Yoh Kawano  
OIT/ATS

## OIT's Academic Technology Services provides computing and staff support for faculty and researchers via:

### Facilities:

- Technology Sandbox
- UCLA Visualization Portal

### Staff Experts

- Web Team
- Portal Group
- Geographic Information Systems (GIS) Mapshare

### Partnerships

- Institute for Digital Research and Education (IDRE)
- The Experiential Technologies Center (ETC)
- Library and CDH for Digital Asset Creation and Management



# Campus Cyberinfrastructure

*"Cyberinfrastructure is the **coordinated aggregate of software, hardware and other technologies**, as well as **human expertise**, required to support current and future discoveries in science and engineering. The challenge of Cyberinfrastructure is to integrate relevant and often disparate resources to provide a useful, usable, and enabling framework for research and discovery characterized by broad access and "end-to-end" coordination."*

*- Fran Berman*